

**Demo PDF file. This file includes questions: 10 from 158. Full version of file looks the same as demo, but full version includes all questions. You may download file with all questions by link on bottom of this page**

---

## **Flight Operations**

**1. If a pilot experiences spatial disorientation during flight in a restricted visibility condition, the best way to overcome the effect is to**

- **Rely upon the aircraft instrument indications.**
  - Concentrate on yaw, pitch, and roll sensations.
  - Consciously slow the breathing rate until symptoms clear and then resume normal breathing rate.
-

**2. (Refer to Figure 52.) What is the recommended communications procedure for landing at Lincoln Municipal during the hours when the tower is not in operation?**

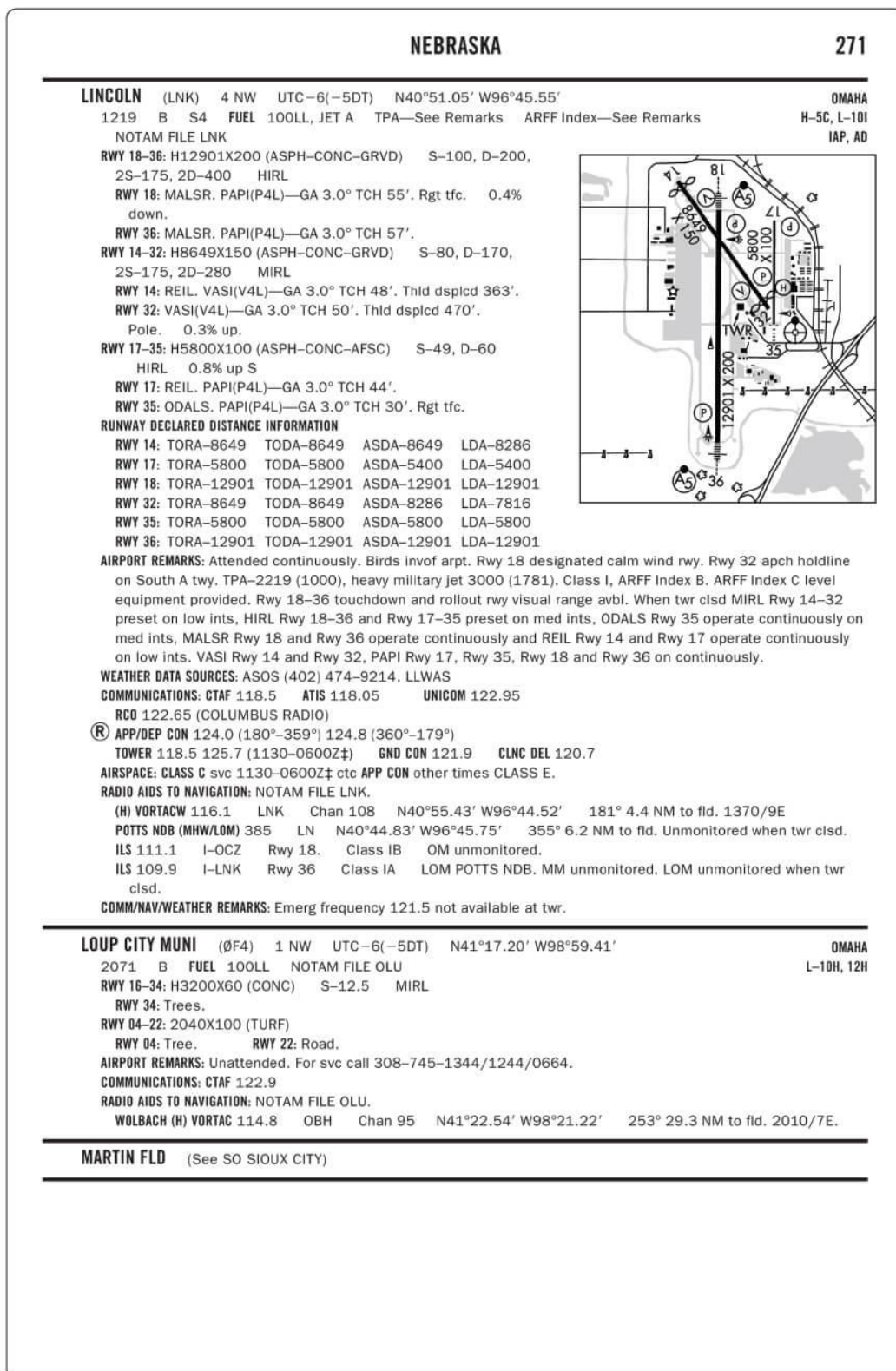


FIGURE 52.—Chart Supplements U.S. (formerly Airport/Facility Directory).

- **Monitor airport traffic and announce your position and intentions when instructed by approach control.**
- Contact UNICOM on 122.95 MHz for traffic advisories.
- Monitor ATIS for airport conditions, then announce your position on 122.95 MHz.

---

**3. A pilot should be able to overcome the symptoms or avoid future occurrences of hyperventilation by**

- Closely monitoring the flight instruments to control the airplane.
  - **Slowing the breathing rate, breathing into a bag, or talking aloud.**
  - Increasing the breathing rate in order to increase lung ventilation.
- 

**4. If the grade of fuel used in an aircraft engine is lower than specified for the engine, it will most likely cause**

- A mixture of fuel and air that is not uniform in all cylinders.
  - Lower cylinder head temperatures.
  - **Detonation.**
- 

**5. (Refer to Figure 9, area B.) How should the flight controls be held while taxiing a tailwheel airplane into a right quartering headwind?**

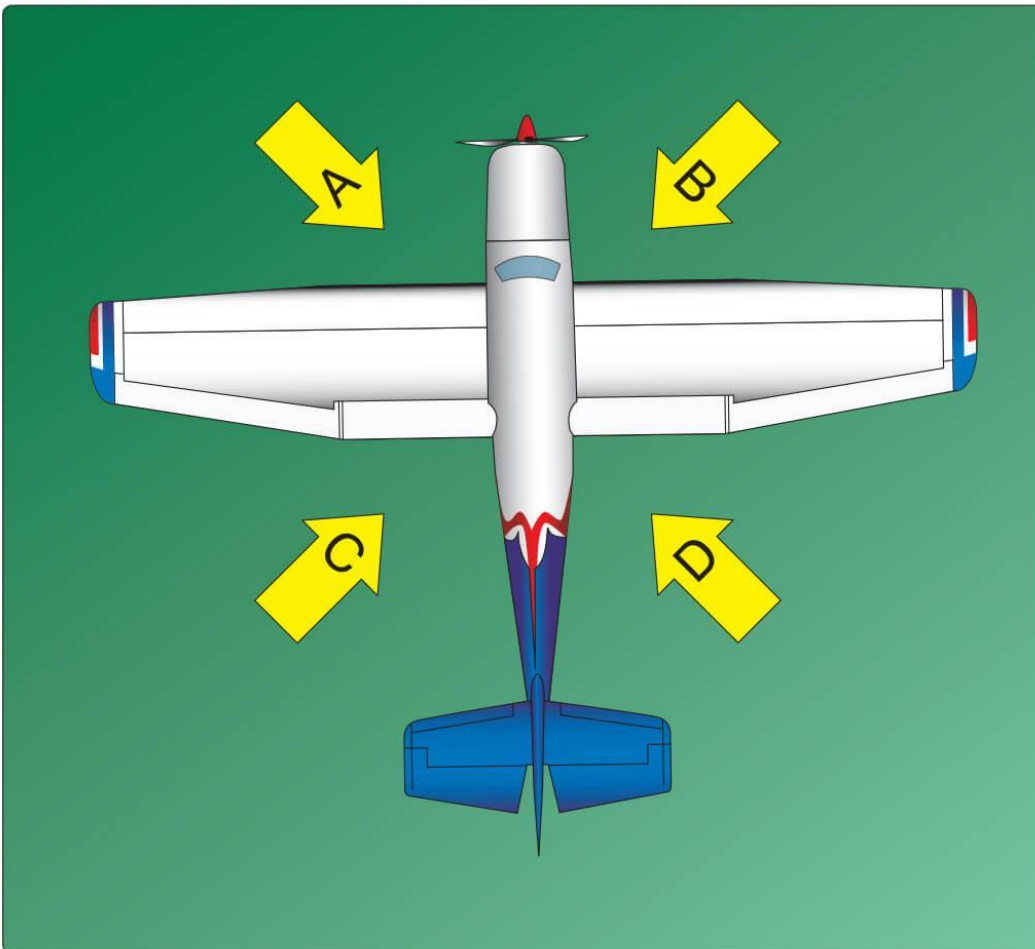


FIGURE 9.—Control Position for Taxi.

- **Right aileron up, elevator up.**
  - Right aileron down, elevator neutral.
  - Right aileron up, elevator down.
-

**6. A lack of orientation with regard to the position, attitude, or movement of the aircraft in space is defined as**

- **Spatial disorientation.**
  - Hyperventilation.
  - Hypoxia.
- 

**7. When should pilots state their position on the airport when calling the tower for takeoff?**

- When visibility is less than 1 mile.
  - When parallel runways are in use.
  - **When departing from a runway intersection.**
- 

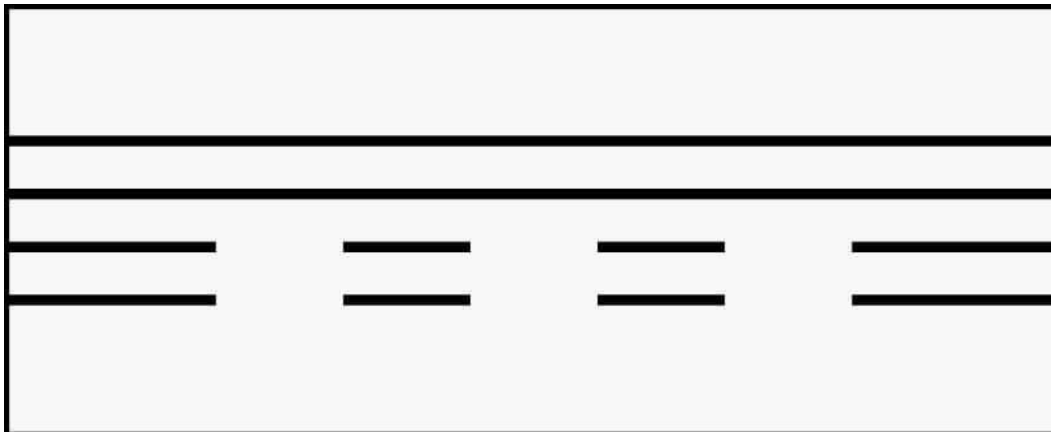
**8. What is one procedure to aid in cooling an engine that is overheating?**

- **Enrichen the fuel mixture.**
  - Increase the RPM.
  - Reduce the airspeed.
- 

**9. Pilots and/or flight crewmembers involved in NMAC occurrences are urged to report each incident immediately:**

- By cell phone to the nearest Flight Standards District Office (FSDO) as this is an emergency.
  - To local law enforcement.
  - **By radio or telephone to the nearest FAA ATC Facility or FSS.**
- 

**10. From the cockpit, this marking confirms the aircraft to be**



- On a taxiway, about to enter runway zone.
  - **On a runway, about to clear.**
  - Near an instrument approach clearance zone.
-