

Demo PDF file. This file includes questions: 10 from 33. Full version of file looks the same as demo, but full version includes all questions. You may download file with all questions by link on bottom of this page

Communications and Radar Services

1. (Refer to Figure 20, area 3.) What is the recommended communications procedure for a landing at Currituck County Airport?



FIGURE 20.—Sectional Chart Excerpt.

NOTE: Chart is not to scale and should not be used for navigation. Use associated scale.

- **Transmit intentions on 122.9 MHz when 10 miles out and give position reports in the traffic pattern.**
- Contact Elizabeth City FSS for airport advisory service.
- Contact New Bern FSS for area traffic information.

2. (Refer to Figure 21, area 2.) The CTAF/MULTICOM frequency for Garrison Airport is

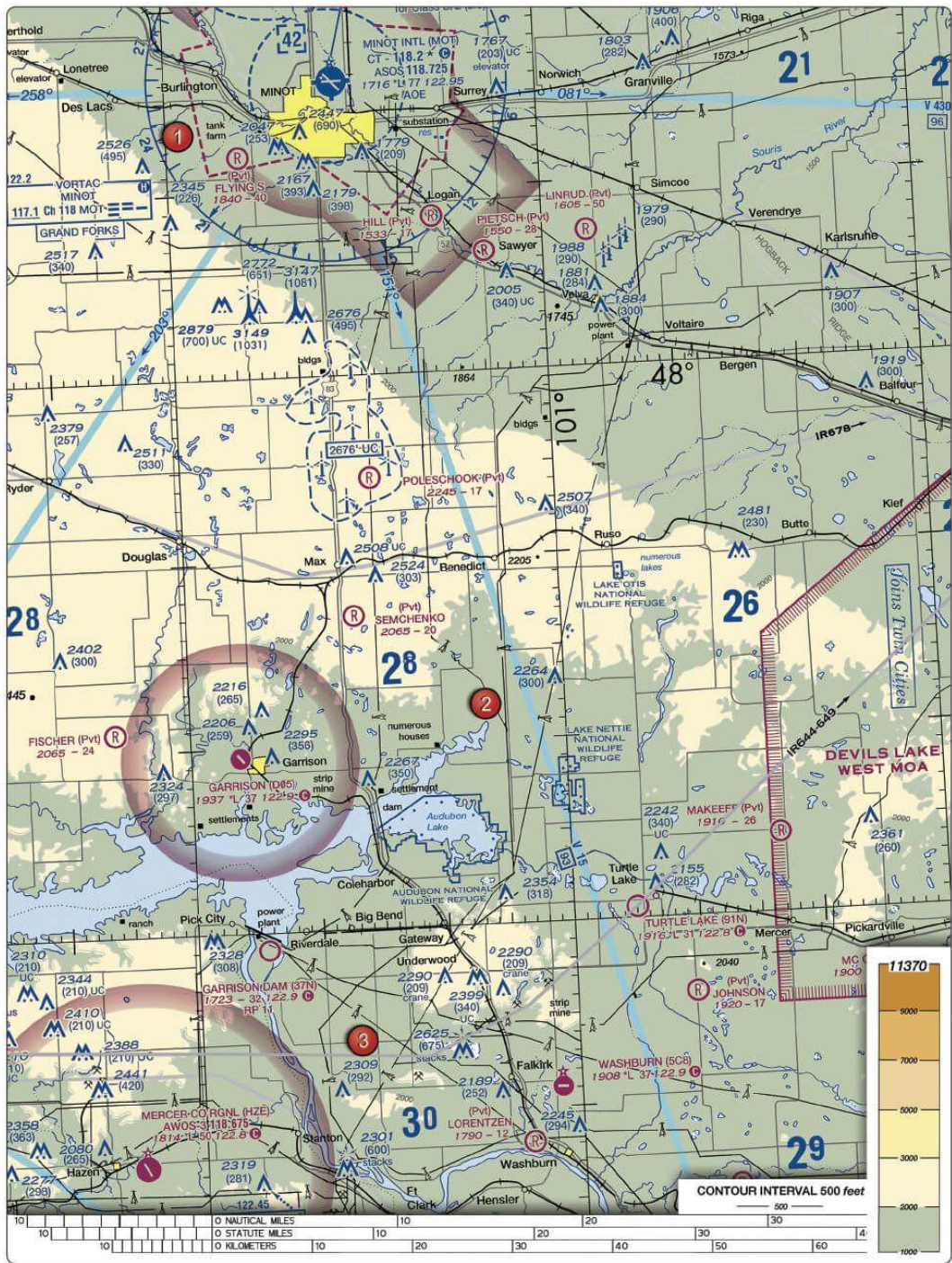


FIGURE 21.—Sectional Chart Excerpt.

NOTE: Chart is not to scale and should not be used for navigation. Use associated scale.

- 122.8 MHz.
- 122.9 MHz.
- 123.0 MHz.

3. (Refer to Figure 22, area 2; and Figure 31.) At Coeur d'Alene, which frequency should be used as a Common Traffic Advisory Frequency (CTAF) to self-announce position and intentions?

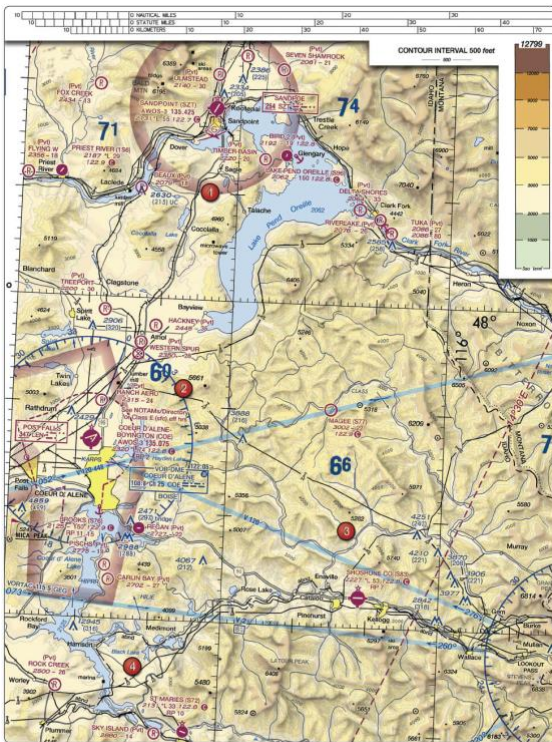


FIGURE 22.—Sectional Chart Excerpt.
NOTE: Chart is not to scale and should not be used for navigation. Use associated scale.

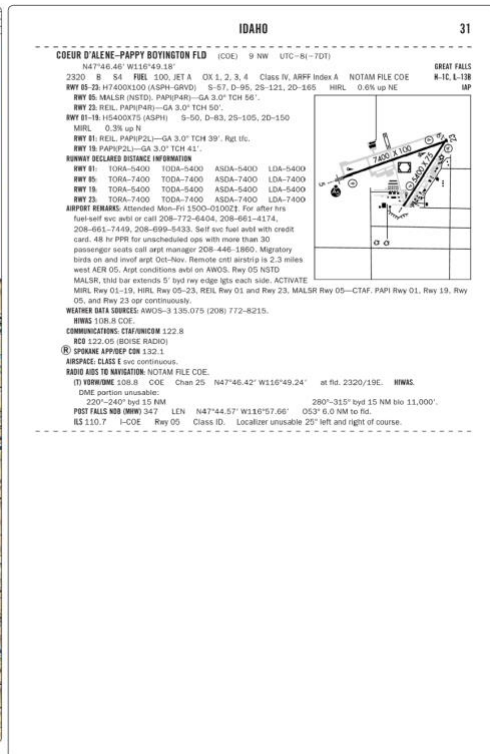


Figure 31. Chart Supplement.

- 122.05 MHz.
- 122.1/108.8 MHz.
- **122.8 MHz.**

4. (Refer to Figure 22, area 2; and Figure 31.) At Coeur d'Alene, which frequency should be used as a Common Traffic Advisory Frequency (CTAF) to monitor airport traffic?

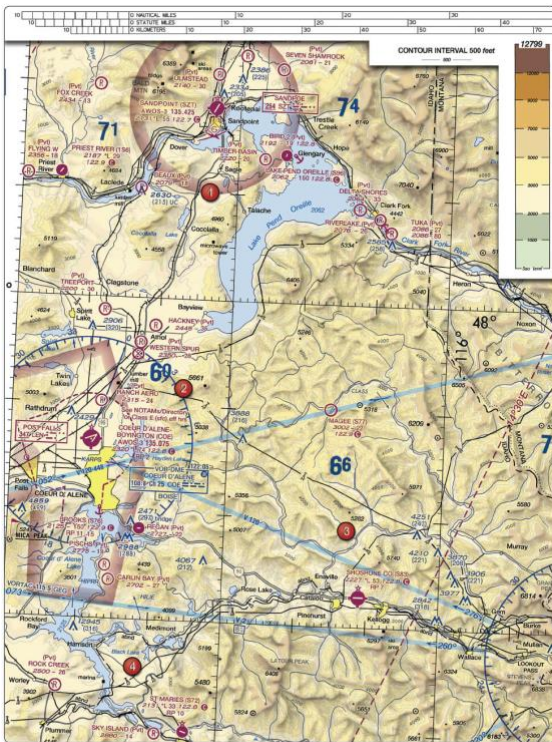


FIGURE 22.—Sectional Chart Excerpt.
NOTE: Chart is not to scale and should not be used for navigation. Use associated scale.

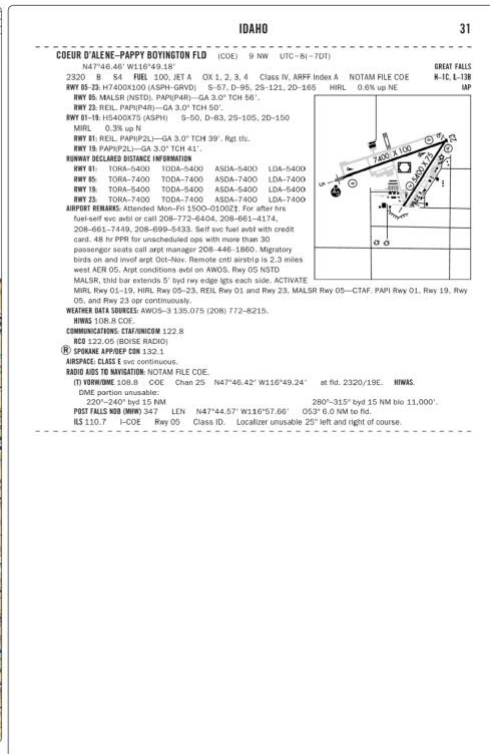


FIGURE 31. Chart Supplement.

- 122.05 MHz.
- 135.075 MHz.
- **122.8 MHz.**

6. (Refer to Figure 25, area 3.) If Dallas Executive (RBD) Tower is not in operation, which frequency should be used as a Common Traffic Advisory Frequency (CTAF) to monitor airport traffic?

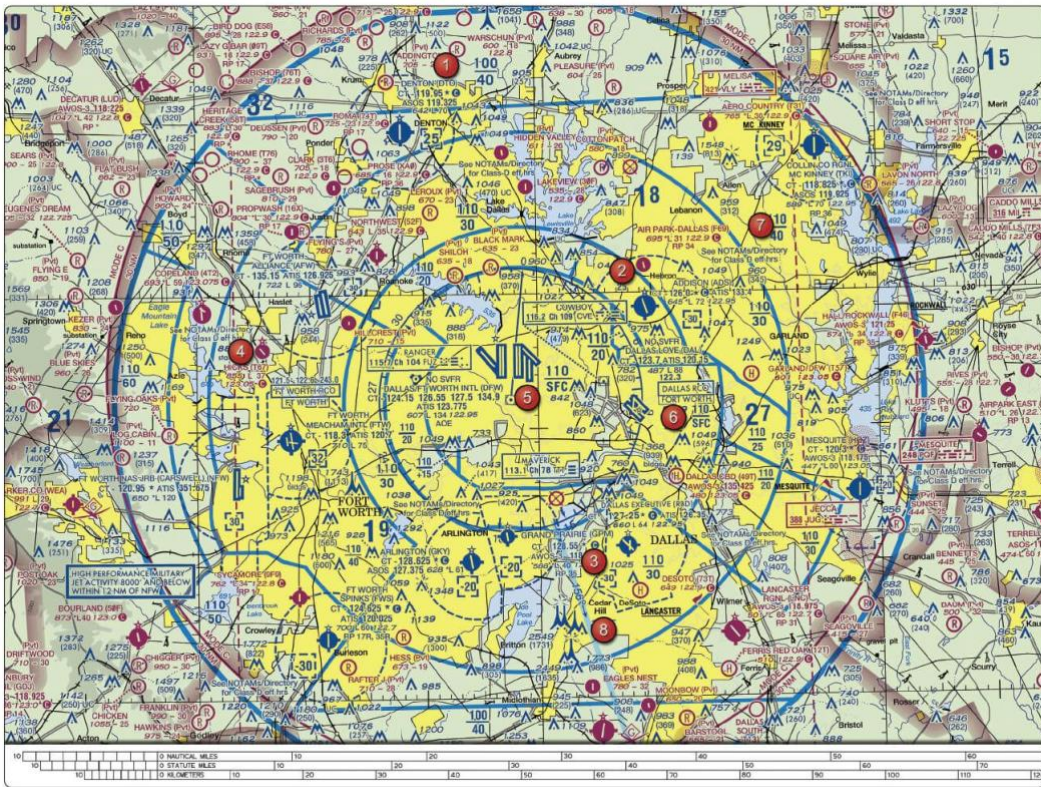


FIGURE 25.—Sectional Chart Excerpt.

NOTE: Chart is not to scale and should not be used for navigation. Use associated scale.

- **127.25 MHz.**
- 122.95 MHz.
- 126.35 MHz.

7. (Refer to Figure 26, area 2.) What is the recommended communication procedure when inbound to land at Cooperstown Airport?

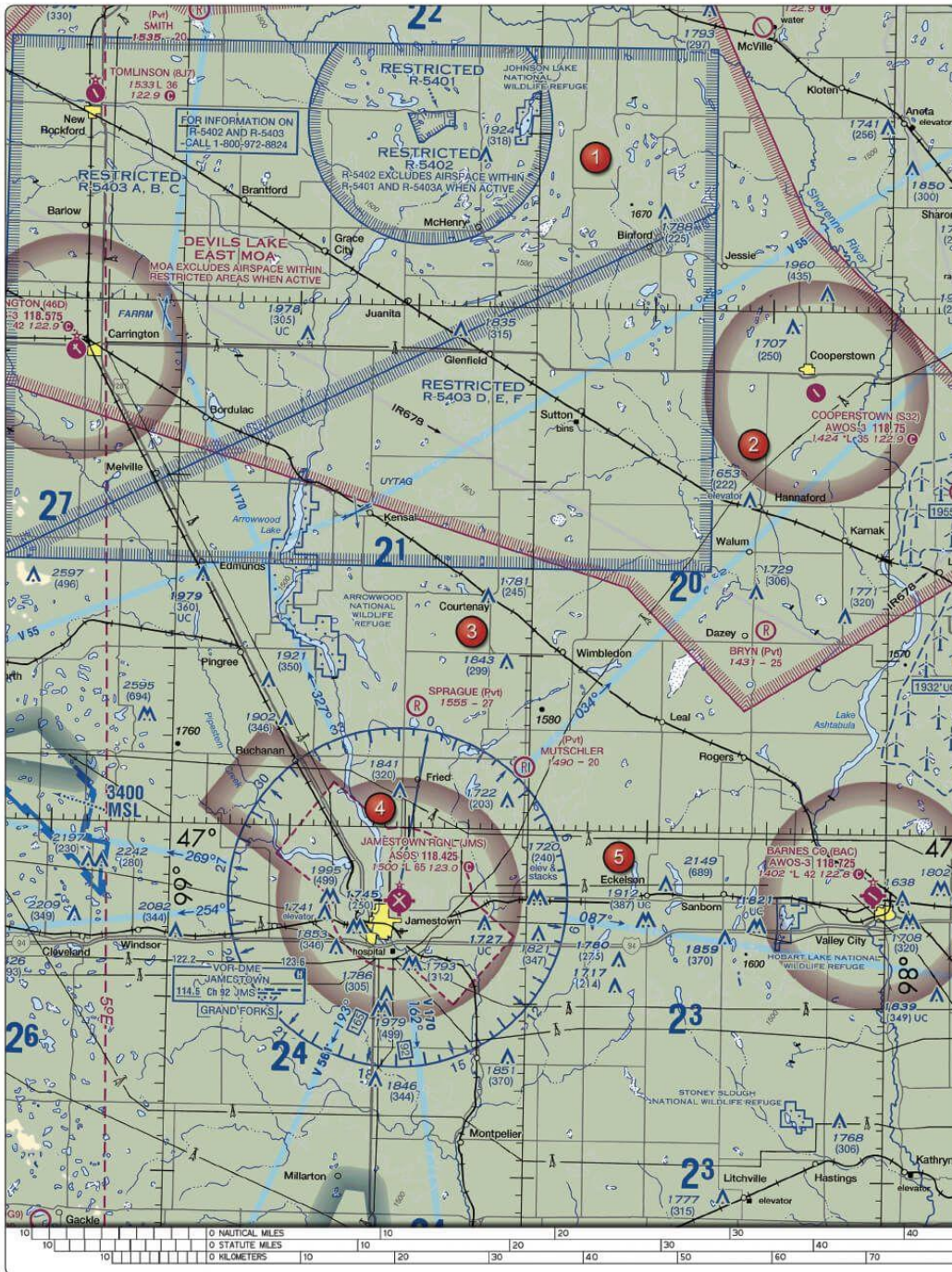


FIGURE 26.—Sectional Chart Excerpt.

NOTE: Chart is not to scale and should not be used for navigation. Use associated scale.

- **Broadcast intentions when 10 miles out on the CTAF/MULTICOM frequency, 122.9 MHz.**
- Contact UNICOM when 10 miles out on 122.8 MHz.
- Circle the airport in a left turn prior to entering traffic.

8. (Refer to Figure 26, area 4.) The CTAF/UNICOM frequency at Jamestown Airport is

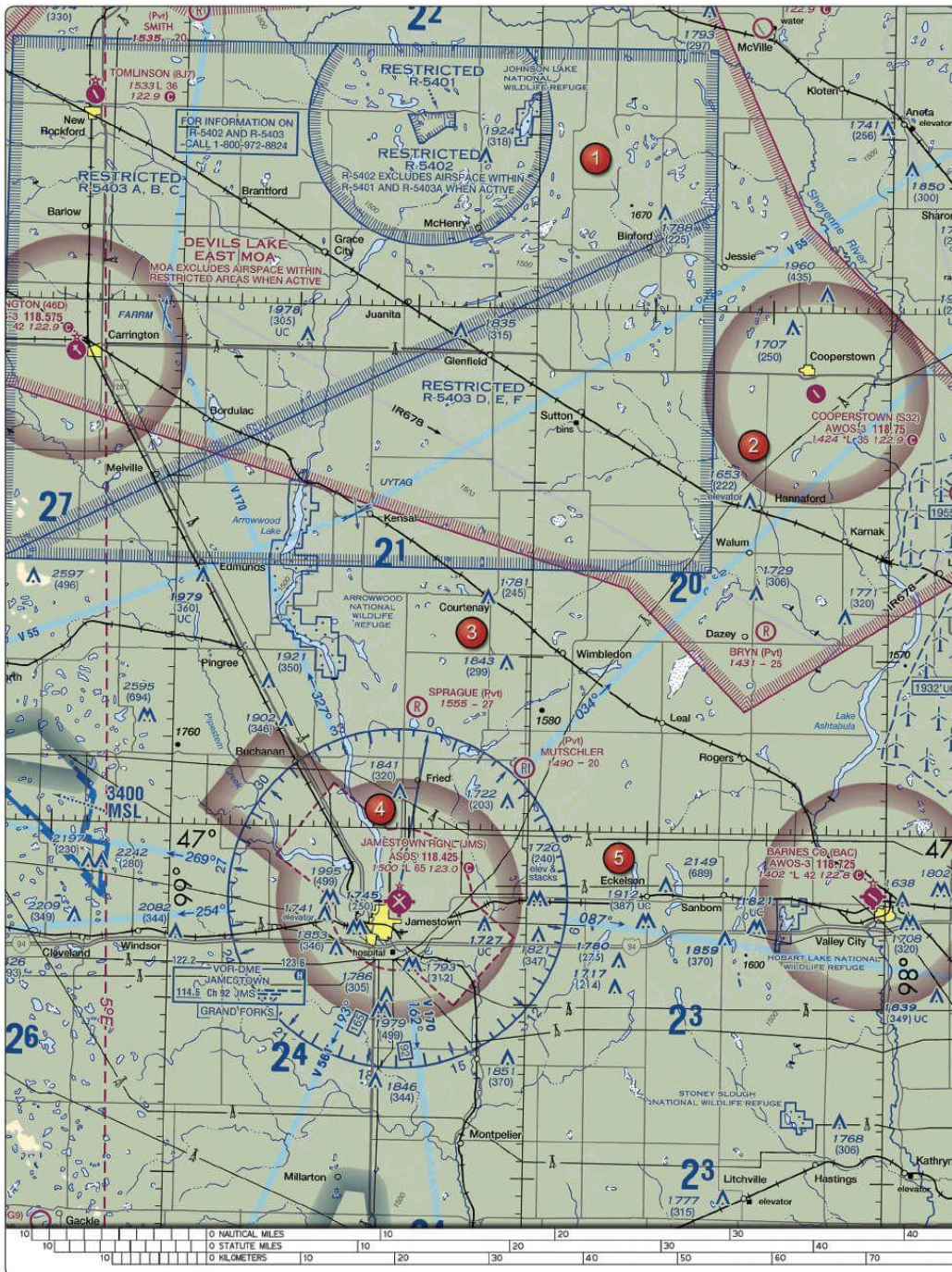


FIGURE 26.—Sectional Chart Excerpt.

NOTE: Chart is not to scale and should not be used for navigation. Use associated scale.

- 122.0 MHz.
- **123.0 MHz.**
- 123.6 MHz.

9. (Refer to Figure 26, area 5.) What is the CTAF/UNICOM frequency at Barnes County Airport?

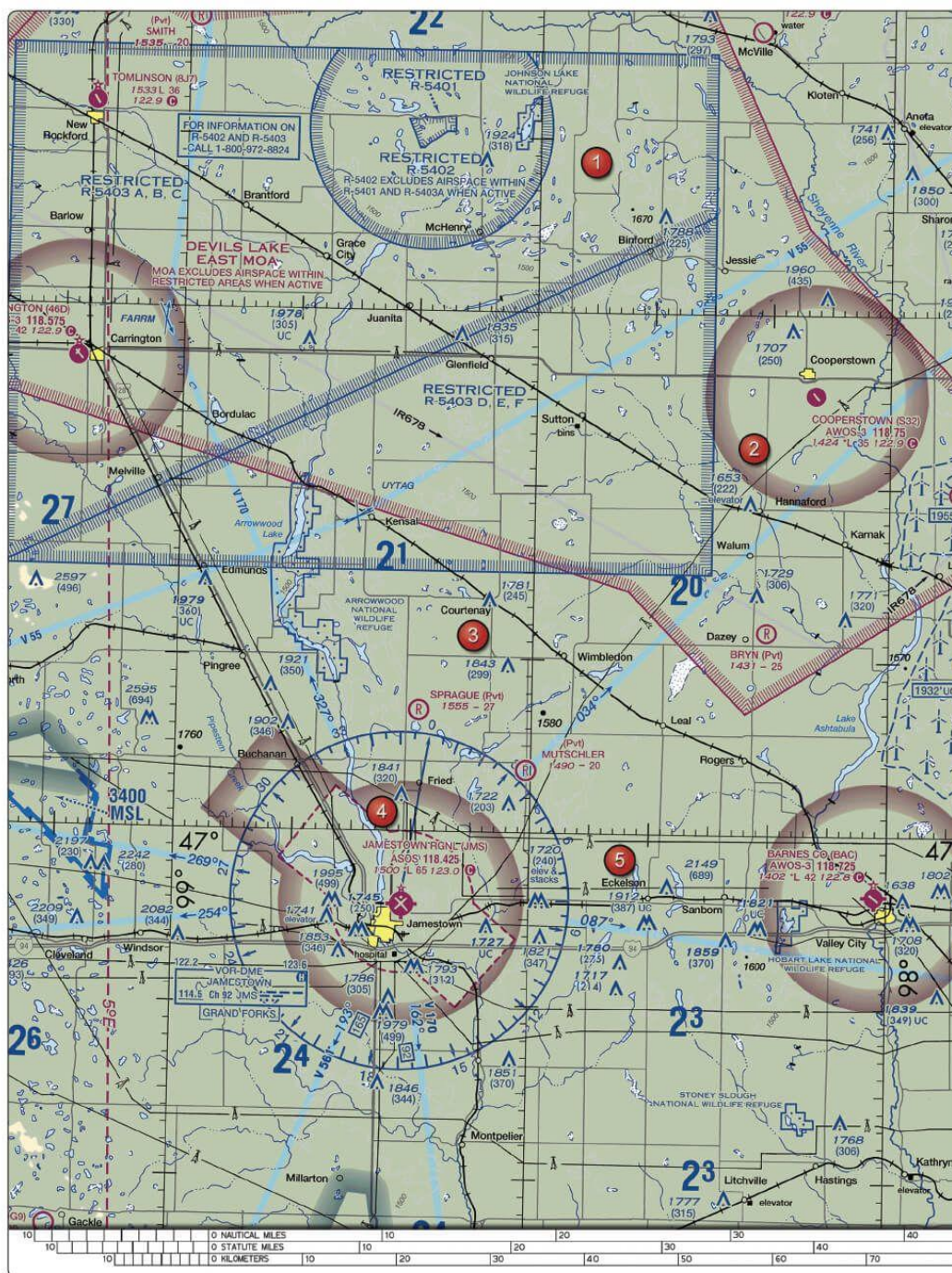


FIGURE 26.—Sectional Chart Excerpt.

NOTE: Chart is not to scale and should not be used for navigation. Use associated scale.

- 122.0 MHz.
- **122.8 MHz.**
- 123.6 MHz.

10. When flying HAWK N666CB, the proper phraseology for initial contact with McAlester AFSS is

- **"MC ALESTER RADIO, HAWK SIX SIX SIX CHARLIE BRAVO, RECEIVING ARDMORE VORTAC, OVER."**
- "MC ALESTER STATION, HAWK SIX SIX SIX CEE BEE, RECEIVING ARDMORE VORTAC, OVER."
- "MC ALESTER FLIGHT SERVICE STATION, HAWK NOVEMBER SIX CHARLIE BRAVO, RECEIVING ARDMORE VORTAC, OVER."

